



# World Trip Plan

Gemstone Travel in Nepal

## Day 01 Kathmandu

On reaching Kathmandu, welcomed by WTP official and checked in at hotel, freshened up.

Kathmandu, the capital and largest city of Nepal, is a bustling metropolis located at an elevation of approximately 1,400 metres (4,600 ft) in the Kathmandu Valley. It is a major centre of tourism, culture, and the national economy, known for its ancient traditions, rapid modernisation, and diverse attractions. The city is surrounded by hills and is the gateway to the Himalayas, offering a blend of the old and the new. Kathmandu is located in the Kathmandu Valley, a bowl-shaped region in central Nepal. The city lies near the confluence of the Bagmati and Vishnumati rivers. It is surrounded by hills, including Shivapuri, Phulchoki, Nagarjuna, and Chandragiri. Kathmandu, Lalitpur, and Bhaktapur.

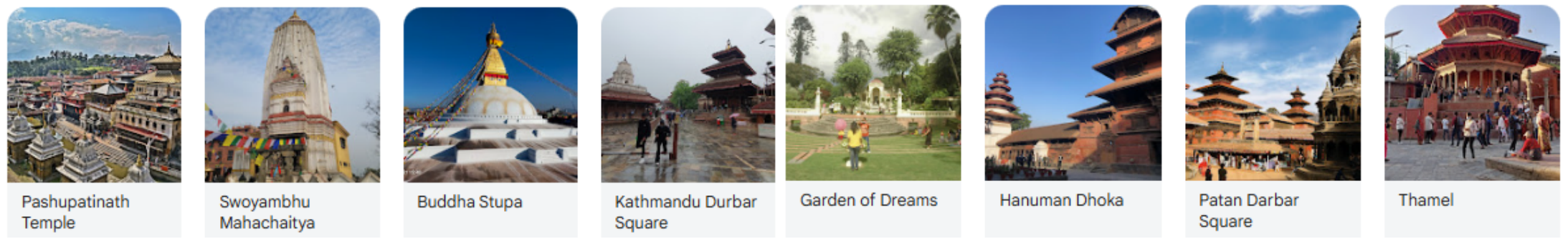
## Night Stay in Kathmandu

## Day 02 Kathmandu



Breakfast

Kathmandu is a hub of both ancient traditions and modern progress. It is home to numerous temples, stupas, palaces and shrines reflecting the country's rich cultural heritage. The Durbar Squares of Kathmandu, Patan and Bhaktapur are UNESCO World Heritage Sites showcasing ancient architecture and urban spaces. Thamel, a popular tourist area, has a wide variety of shops, restaurants and hotels. The city is known for its vibrant nightlife, with bars and casinos open late into the night.



Night Stay in Kathmandu

Day 03 Kathmandu to Pokhara



Pokhara, Nepal, is a vibrant and picturesque city known for its stunning natural beauty, especially its proximity to the Annapurna range and the iconic Machhapuchhre (Fishtail) mountain. It's often called the "Jewel of the Himalaya" due to its stunning landscapes and the serene beauty of Phewa Lake. Pokhara is a popular tourist destination and gateway to the Annapurna Circuit, a famous trekking route. Pokhara is centered around Phewa Lake, offering scenic views of the surrounding mountains, including the Annapurna range and Machhapuchhre. The towering Annapurna range forms a magnificent backdrop to Pokhara, a popular attraction for trekkers and nature lovers.

Night Stay in Pokhara

## Day 04 Pokhara



Breakfast

Pokhara is in the northwestern corner of the Pokhara Valley, which is a widening of the Seti Gandaki valley that lies in the region (Pahad) of the Himalayas. In this region, the mountains rise very quickly, and within 30 kilometres (19 miles), the elevation rises from 1,000 to 7,500 metres (3,300 to 24,600 feet). Pokhara is the starting and ending point for the famous Annapurna Circuit trek, a popular adventure for trekking enthusiasts. Various other trekking routes also start from Pokhara, catering to different skill levels. Enjoy a boat ride on Phewa Lake, offering a unique perspective of the surrounding mountains and the lake's serene beauty. Pokhara is a popular destination for paragliding and ultra flight experiences, offering breathtaking aerial views of the landscape. Other activities include bungee jumping, rafting, and ziplining.



Shree  
Bindhyabasini...



International  
Mountain Museum



Gupteshwor  
Mahadev Cave



Tal Barahi Temple,  
Pokhara



Pokhara Lakeside

4.6 ★ (17K)



Devi's Fall Pokhara



Phewa Lake



World Peace  
Pagoda , Pokhara

## Night Stay in Pokhara

## Day 05 Pokhara to Kathmandu



Breakfast

Today We Will Be Heading Home. Now It Is Time To Say Goodbye To Our Travel Companions. Let Us Keep In Touch With Each Other Through Email, Phone, Whatsapp, Facebook, Instagram And Meet Again On Another Memorable Trip. See You All!! The Guests Of The Trip Will Head Towards Their Scheduled Departure And Begin The Journey Back Home.

# Gemstone Travel in Nepal

## Accommodation Details

| Hotel Name                  | Number of Night | Palace    |
|-----------------------------|-----------------|-----------|
| Nepal Pavilion Inn/ Similar | 02 Night        | Kathmandu |
| Hotel City Inn/ Similar     | 02 Night        | Pokhara   |

| TOUR INCLUSIONS  | TOUR EXCLUSION   |
|--|--|
| <ul style="list-style-type: none"><li>• Travel in comfortable AC Vehicle as per itinerary</li><li>• Room sharing as per package (Twin Sharing / Triple Sharing / Four Sharing).</li><li>• Accommodation in comfortable and convenient hotels</li><li>• All meals – Breakfast, Dinner (set menu) as stated in the itinerary</li><li>• Accommodation in listed hotels/similar.</li><li>• Sightseeing as per itinerary.</li><li>• Transportation – Entire round-trip travel by private vehicle.</li><li>• All existing applicable taxes i.e. hotel tax and transport tax.</li><li>• All toll taxes, parking charges and driver allowances are included.</li><li>• Big / Small Vehicle will be provided as per the group size.</li></ul> | <ul style="list-style-type: none"><li>• 5% Govt. Service tax, Cost of Lunch. Guide Fees</li><li>• Any monument entry fees / camera fees.</li><li>• Any meal, which is not mentioned above.</li><li>• Any guide charges, For Heater Requirement directly contact to Hotelier</li><li>• Any adventure activity skiing, paragliding etc.</li><li>• Any personal Expenses- Laundry, shopping etc.....</li><li>• Any expenses incurred due to Exigencies.</li><li>• Cost of Insurance for any extra stay pre/post tour.</li><li>• High Season / Festive Season Supplements Applied by Hotels From Time to Time.</li><li>• Laundry, wines &amp; alcoholic beverages, mineral water (unless</li></ul> |

[\*\*Terms and Conditions\*\*](#)

[\*\*Account details\*\*](#)