



World Trip Plan

Budget Planning for Do Dham with Tungnath

Day 01 Guptkashi



Dinner

On Reaching Sonprayag, Welcomed By WTP Official And Checked In At Hotel, Freshened Up And Took Rest.

On the way you can see the beautiful Mandakini river at Tilwara. Mandakini river comes from Kedarnath, drive along the river to reach Guptkashi, visit Ardh Narishwar temple at Guptkashi. Check out hotel arrival at Guptkashi

Night stay at Sonprayag

Day 02 Guptkashi to Kedarnath



Breakfast



Dinner

Early morning after breakfast departure for Kedarnath Dham. Enjoy Kedarnath Darshan.

By Helicopter: Morning our driver will drop you your pre-book Helipad. You can inform the driver about your arrival time whether it will be by helicopter or by trek, so that Driver will be there to pick you up. (Note: helicopter ticket is not included in this package).

By Trek: Morning our driver will transfer you to Sonprayag then you have to take a local jeep for Gaurikund & then your trek starts for Kedarnath Ji. After darshan, you follow the same & return to Sonpraag. There is a big parking issue so the driver will go back to another palace if his contact no. is not working then you have to arrange another taxi or wait for your driver.

Kedarnath: The Kedarnath shrine, one of the 12 jyotirlingas of Lord Shiva, is a scenic spot situated, against the backdrop of the majestic Kedarnath range. Kedar is another name of Lord Shiva. According to legend, the Pandavas after having won over the Kaurava in the Kurukshetra war, feel guilty of having killed their own brothers and sought the blessings of Lord Shiva for ransom. He eluded them repeatedly and while fleeing took refuge at Kedarnath in the form of a bull. On being followed he dived into the ground, leaving his hump on the surface.

Kedarnath Weather: – Due to its high elevation, the weather in Kedarnath remains cold for the most part of the year. Summer here is cool and agreeable while winter is severe. During the summer season, the temperature varies around 20°Celsius. Light woolen wear is recommended. The Winter season in Kedarnath is severe with the mercury falling to as low as 0°Celsius. During this time the place experiences snowfall as well. Due to the extreme chilly climatic conditions, this time is usually avoided by tourists.



Shri Kedarnath
Jyotirlinga Temple



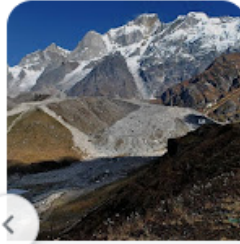
Shri Bhairavnath
Mandir



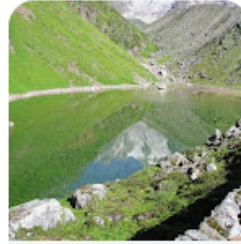
Jagadguru Adi
Shankaracharya...



Bheem Shila,
Kedarnath



Chorabari Glacier



Chorabari Tal



Adi
Shankaracharya...



AIRCOPER FF
GROUND...

Night stay at Kedarnath

Day 03 Kedarnath to Guptkashi



Breakfast



Dinner

The morning after darshan, return to Guptkashi, by Track or helicopter.

Night stay at Guptkashi

Day 04 Guptkashi to Tungnath



Breakfast



Dinner

Ukhimath is a small town and a Hindu pilgrimage site in the Rudraprayag district of Uttarakhand, India. It is located at an altitude of 1,311 meters and at a distance of 41 kilometers from Rudraprayag. A spiritual paradise. Ukhimath serves as the winter abode for the deities of Kedarnath and Madhyamaheshwar. When harsh winters make Kedarnath inaccessible, the idols are brought to Ukhimath, making it an important religious center. Here are some places to visit in Ukhimath, Uttarakhand:

Night stay at Pipalkoti

Day 05 Pipalkoti to Badrinath

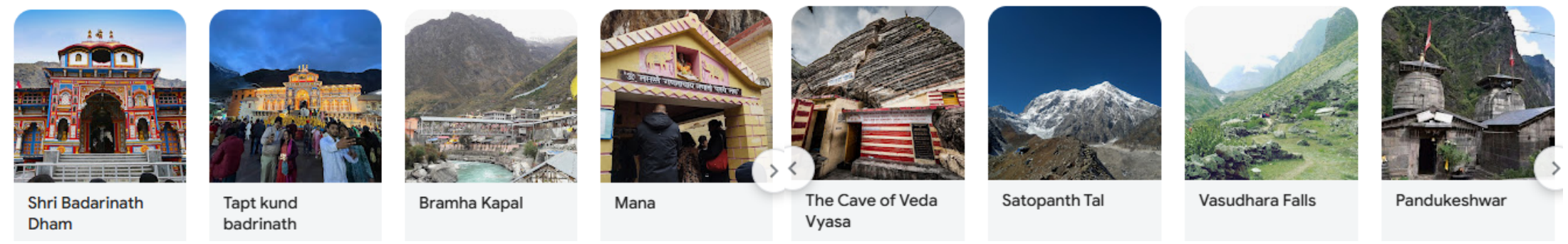


Breakfast



Dinner

The morning after breakfast, move to Badrinath. Check in to the hotel arrival in Badrinath. Pilgrims after having a bath in the Tapt Kund have the Darshan of Badrivishal & Aarti in the evening. Brahma Kapal is important for Pinddan Shraddh of ancestors (Pitrus). There are other interesting sightseeing spots like Mana, Vyas Gufa, Mata Murti, Charanpaduka, Bhinkund, and the “Mukh” of the Saraswati River. Just within the three km of Badrinath Ji. Mana Village: Inhabited by an Indo-Mongolian tribe, it is the last Indian village before Tibet.



Night stay at Pipalkoti

Day 06 Pipalkoti to Rishikesh

 Breakfast

After breakfast we will head to Rishikesh. On arrival they will be met by the World Trip Plan tour manager at the airport and depart for Rishikesh. Rishikesh is a city in the northern state of Uttarakhand, India, in the foothills of the Himalayas along the Ganges River. The river is considered sacred and the city is famous as a center for the study of yoga and meditation. Temples and ashrams (centers for spiritual study) are located on the eastern bank around the Swarg Ashram, a traffic-free, alcohol-free and vegetarian enclave upstream from the city of Rishikesh. Overnight stay in Rishikesh.



Triveni Ghat



Parmarth Niketan



Ram Jhula



Lakshman Temple



Swami Dayananda



Baba Kali Kamali

After the tour of Rishikesh we will leave for back to Haridwar and will have a local Sightseeing.

Haridwar is an ancient city and important Hindu pilgrimage site in North India's Uttarakhand state, where the River Ganges exits the Himalayan foothills. The largest of several sacred ghats (bathing steps), Har Ki Pauri hosts a nightly Ganga Aarti (river-worshipping ceremony) in which tiny flickering lamps are floated off the steps. Worshipers fill the city during major festivals including the annual Kanwar Mela.

It is one of the places where drops of the elixir of life that erupted from 'Samudra Manthan'. In the evening we experienced the mesmerizing Ganga Aarti at Har Ki Pauri followed by a short Meet & Greet session.



Har Ki Pauri,
Haridwar



Maa Mansa Devi
Temple, Niranjani...



Shri Maa Chandi
Devi Temple,...



Shantikunj Gayatri
Parivar



Shree
Daksheshwar...



Saptrishi Ashram,
Haridwar



Ganga Aarti Sthal,
Haridwar



Bharat Mata
Temple, Haridwar

Today we will leave for the railway station or Airport from where you will depart to your home. Now it is time to say goodbye to our travel companions. Let us keep in touch with each other through email, phone, Whatsapp, Facebook, Instagram and meet again on another memorable trip. See you all!!

Budget Planning for Do Dham with Tungnath

Accommodation Details

Hotel Name	Number of Night	Palace
hotel Giriraj Palace/ Similar	01 Night	Guptkashi
Dharamshala/ Camp	01 Night	Kedharnath
hotel Giriraj Palace/ Similar	01 Night	Guptkashi
Hotel Balbeer Palace/Similar	02Night	Pipalkoti

TOUR INCLUSIONS	TOUR EXCLUSION
<ul style="list-style-type: none">• Travel in comfortable AC/ NON AC Vehicle as per itinerary• Room sharing as per package (Twin Sharing / Triple Sharing / Four Sharing).• Accommodation in comfortable and convenient hotels• All meals – Breakfast, Dinner (set menu) as stated in the itinerary• Accommodation in listed hotels/similar.• Sightseeing as per itinerary.• Transportation – Entire round-trip travel by private vehicle.• All existing applicable taxes i.e. hotel tax and transport tax.• All toll taxes, parking charges and driver allowances are included.• Big / Small Vehicle will be provided as per the group size.	<ul style="list-style-type: none">• 5% Govt. Service tax, Cost of Lunch. Guide Fees• Any monument entry fees / camera fees.• Any meal, which is not mentioned above.• Any guide charges, For Heater Requirement directly contact to Hotelier• Any adventure activity skiing, paragliding etc.• Any personal Expenses- Laundry, shopping etc.....• Any expenses incurred due to Exigencies.• Cost of Insurance for any extra stay pre/post tour.• High Season / Festive Season Supplements Applied by Hotels From Time to Time.• Laundry, wines & alcoholic beverages, mineral water (unless

[Terms and Conditions](#)

[Account details](#)